

A powerful software tool designed for recording and analysing network-traffic at single Ethernet access nodes, optimized for measurements within VoIP and IPTV systems and is provided with a number of specific functions for the Triple Play sector as: list of connections, recording of quality-parameters etc.

The additional functions provide a fast evaluation about the Quality (QoE) of the recorded IPTV programs and VoIP connections. For IPTV a number of specific functions is available as: program table, recording of quality-parameters etc.

In the field WLAN statements can be made about known Accesspoints and field strength values.

The following protocols are decoded:

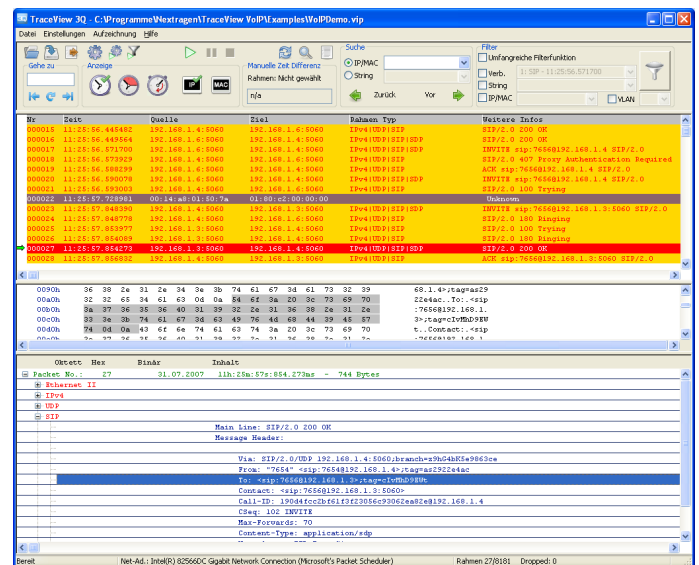
- Ethernet 2, IEEE 803.2
- PPPoE, STUN, MPLS
- IP 4 and 6
- TCP/UDP, ARP/RARP, ICMP, DNS, DHCP
- H.323 (H.225, RAS, H.245, H.235, H.450)
- SIP/SDP
- Skinny, MGCP, IGMP (Multicast -> IPTV)
- RTP, RTCP, T.120

The following codecs are available:

- G.711 a-law
- G.711 μ -law
- GSM
- G.721
- iLBC
- G.729A
- G.723.1
- MPEG-4 AVC; MPEG-2

The perfect solution for measurement and analysis:

- When installing and implementing IP networks
- Evaluation of VoIP networks
- In the fields of assistance, maintenance, quality assurance and conservation of evidence
- For local troubleshooting
- Problems with WLAN
- Long term measurements
- Examine the Quality of Service parameters (SLA)
- For schooling and educational purposes
- Easy to handle also for non-experts



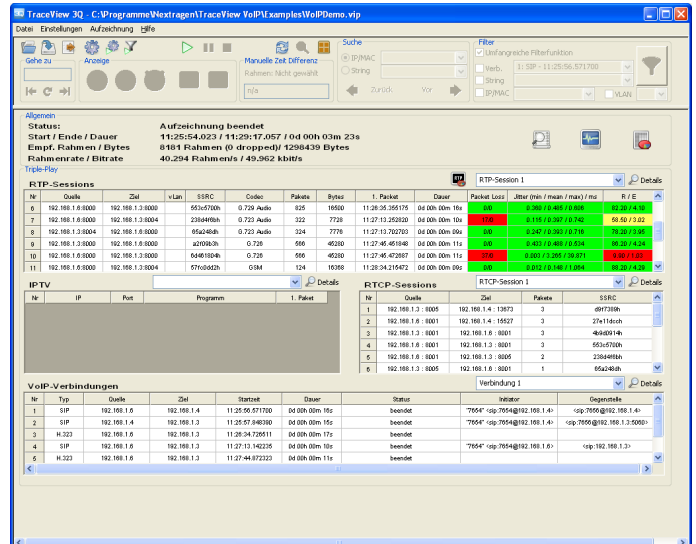
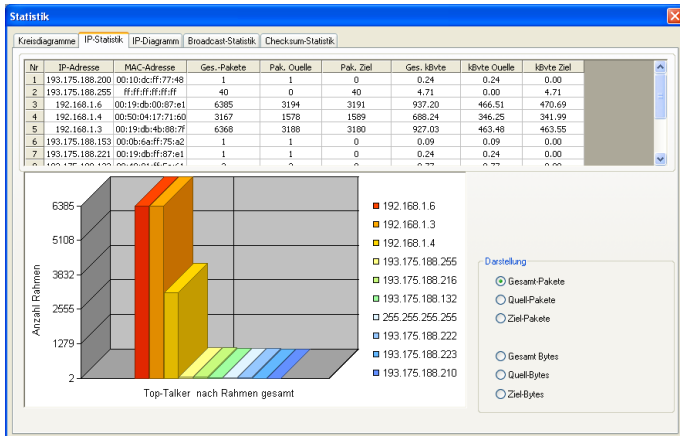
System Requirements:

- OS: Win2000, WinXP, WinVista, Win2003 Server
- Memory: min. 1 GByte
- Harddiskspace: min. 2 GByte
- CPU: min. 2 GHz

Features and Benefits:

- Trace display and detailed decoding (partially at bit-level) of single packets, as well as visualization of single packets in hexadecimals
- Filtering of trace before and after recording
- Extensive search function
- Recording of large data amounts (Merge-, Cut function, automated saving)
- Overview of all Triple Play analysis data
- Easy to use User interface (easy navigation through dialogs)
- Record and Replay of audio and video data
- Loading and saving of single traces
- Printing of protocol-data
- Lists of names which are updated automatically or can be edited manually
- Statistics of recording with network-traffic diagram, circle diagrams with protocol distribution, list of Top-Talkers with graphical display and IP diagram

- Auto recognition of connection (H.323 and SIP) with extensive, selectable list of connections and details of connections
- Extensive diagrams for heavy load performance of connected stations at a network node
- Automated session recognition of RTP data with display of quality parameters
- Display of R factor and MOSCQE value based on E model (ITU-T Rec. G.107)
- Representation of the signalling in a time diagram (arrow diagram)
- Recognition of RTP/RTCP sessions and visualization of related packets, display of reference information
- Display of quality parameters like Inter-Arrival-Time, Jitter and Communication pattern
- Reporting Tool for further processing of the data
- Extensive help functions



NEXT TRAGEN GmbH

Lise-Meitner-Str.2
 D-24941 Flensburg
 Germany

Phone: +49 (0) 461 9041 4440
 Fax: +49 (0) 461 9041 4449
 Email: info@nextragen.de
 www: www.nextragen.de



TR instruments
 Tel.: +420 541 633 670
 Fax: +420 541 212 413
 Křižíkova 70, 612 00 Brno
 tri@trinstruments.cz